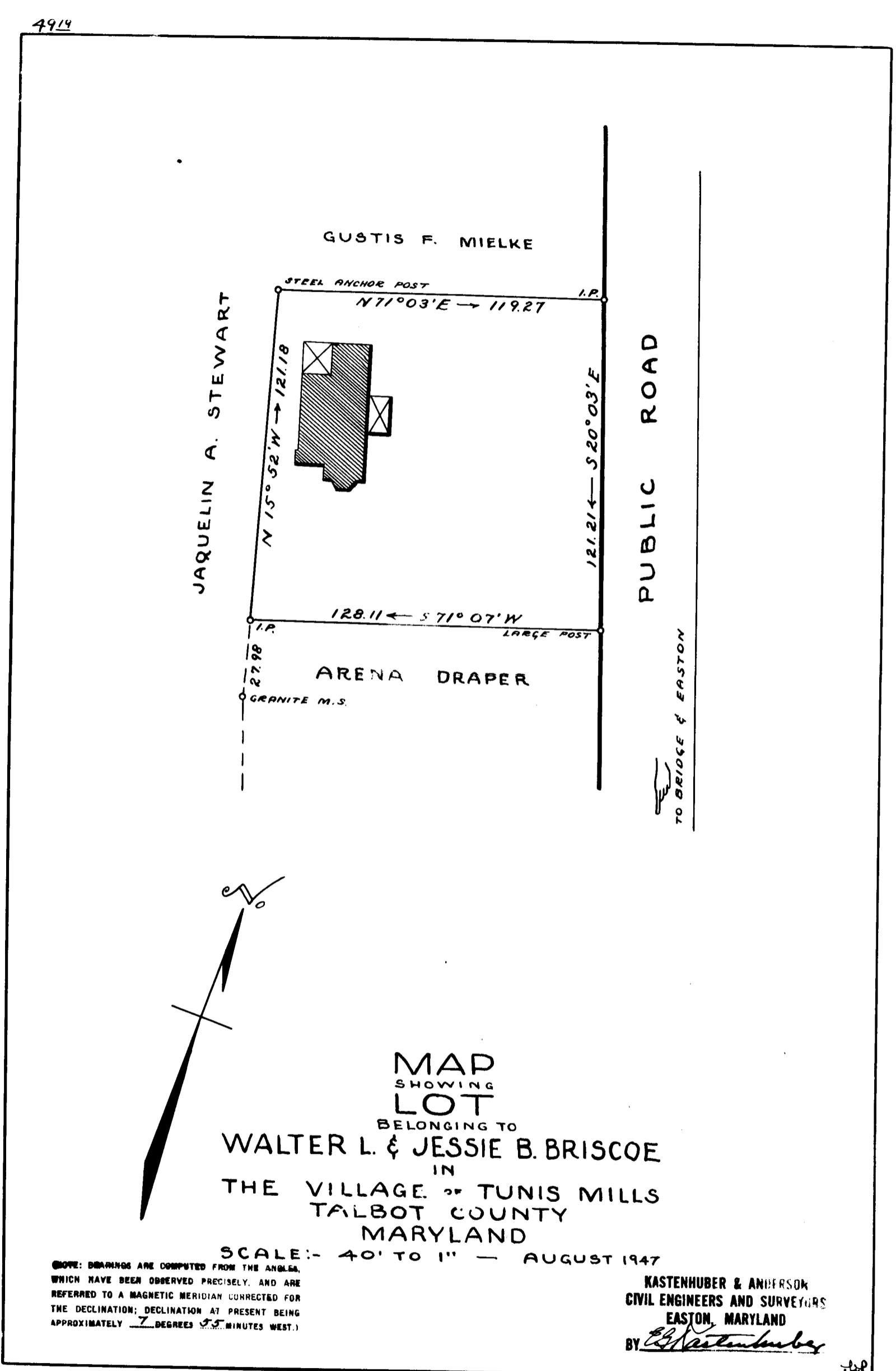
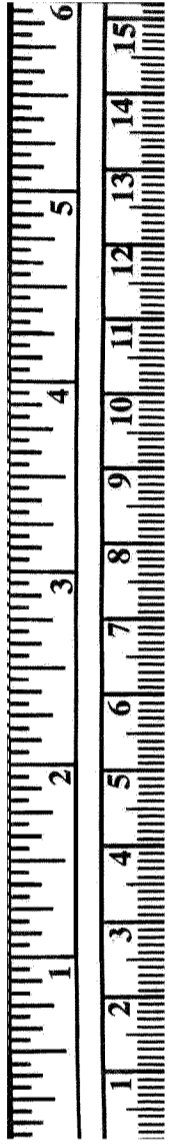


4914



JAQUELIN A. STEWART

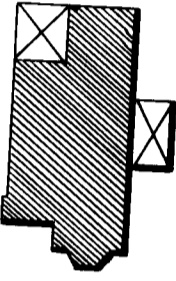
GUSTIS F. MIELKE

STEEL ANCHOR POST

$N 71^{\circ} 03' E \rightarrow 119.27$

I.P.

$N 15^{\circ} 52' W \rightarrow 121.18$



$121.21 \leftarrow S 20^{\circ} 03' E$

$128.11 \leftarrow S 71^{\circ} 07' W$

I.P.

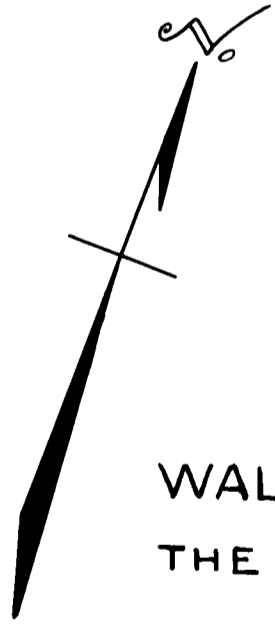
LARGE POST

ARENA DRAPER

GRANITE M.S.

PUBLIC ROAD

TO BRIDGE & EASTON



MAP  
SHOWING  
LOT  
BELONGING TO  
WALTER L. & JESSIE B. BRISCOE  
IN  
THE VILLAGE OF TUNIS MILLS  
TALBOT COUNTY  
MARYLAND

SCALE: - 40' TO 1" - AUGUST 1947

NOTE: BEARINGS ARE COMPUTED FROM THE ANGLES, WHICH HAVE BEEN OBSERVED PRECISELY, AND ARE REFERRED TO A MAGNETIC MERIDIAN CORRECTED FOR THE DECLINATION; DECLINATION AT PRESENT BEING APPROXIMATELY 7 DEGREES 55 MINUTES WEST.

KASTENHUBER & ANDERSON  
CIVIL ENGINEERS AND SURVEYORS  
EASTON, MARYLAND  
BY *E. J. Kasthuber*

4912