

SIDE	DIRECTION AND DISTANCE
1	N 57° 01' 39" E 315.71'
2	N 39° 52' 41" E 302.24'
3	N 67° 29' 26" E 948.71'
4	N 77° 34' 15" E 379.22'
5	S 39° 37' 30" E 186.38'
6	S 78° 21' 40" E 249.63'
7	N 40° 20' 14" E 65.75'
8	N 40° 20' 14" E 1215.66'
9	S 48° 41' 30" E 39.88'
10	S 40° 30' 00" W 71.31'
11	S 25° 16' 10" E 1865.25'
12	S 69° 25' 20" W 1016.14'
13	N 77° 35' 45" W 298.26'
14	S 73° 29' 36" W 84.26'
15	N 68° 28' 44" W 285.99'
16	N 01° 39' 20" W 1109.64'
17	S 25° 21' E 143.07'
18	S 64° 24' W 153.62'
19	S 24° 51' E 465.36'
20	N 82° 11' W 184.14'
21	N 75° 45' W 191.61'
22	S 27° 38' E 730.47'
23	S 08° 12' E 42.90'
24	S 71° 27' W 276.50'
25	S 40° 07' W 321.79'
26	N 04° 11' W 914.36'
27	S 85° 40' W 791.66'
28	S 76° 00' W 1417.22'

DEED TSP 65/114
 979 APR 19 AM 11:03
 QUEEN ANNE'S COUNTY

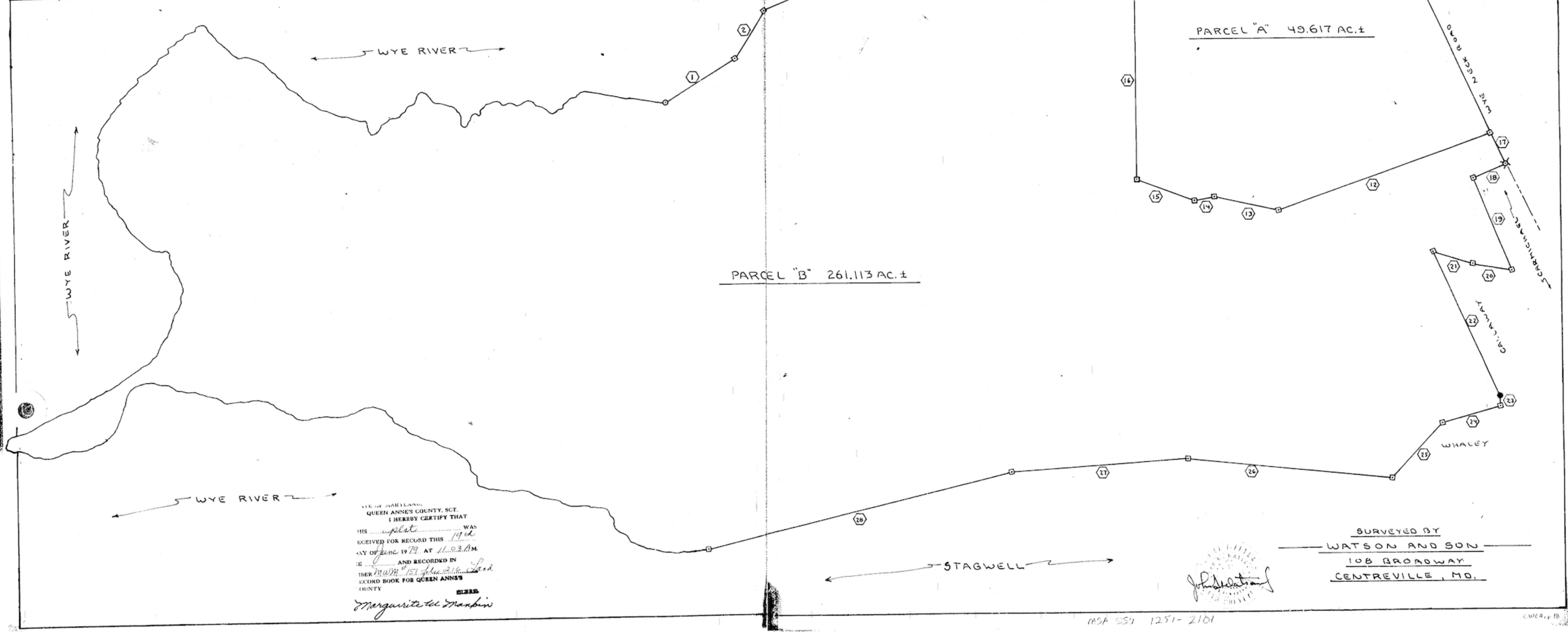
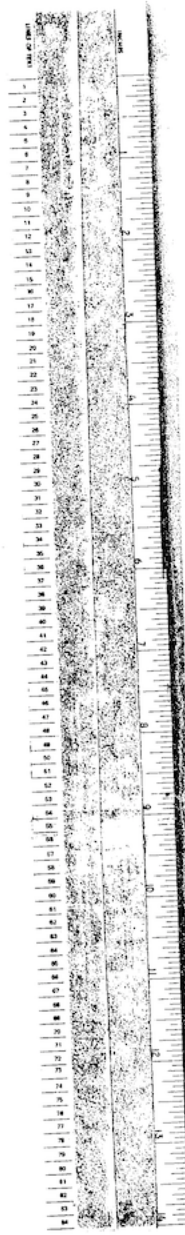
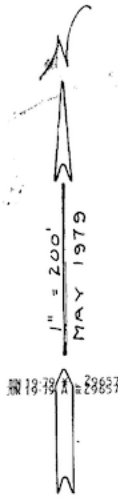
SURVEY OF LANDS OF
JOHN R. KIMBERLY
5TH ELECTION DIST.
QUEEN ANNE'S CO.
MARYLAND

NOTE

FOR LINES WITH THE WYE RIVER ESTABLISHED
 BY PREVIOUS SURVEYS SEE DEED TSP 65/114.

LEGEND

- CONCRETE MONUMENT
- IRON PIPE
- IRON BOLT
- IRON FENCE POST



STATE OF MARYLAND
 QUEEN ANNE'S COUNTY, SCT.
 I HEREBY CERTIFY THAT
 THIS plot WAS
 RECEIVED FOR RECORD THIS 19th
 DAY OF June 1979 AT 11:03 AM
 AND RECORDED IN
 DEED BOOK 107 PAGE 216
 SECOND BOOK FOR QUEEN ANNE'S
 COUNTY
Marguerite M. Manbin

John Watson

SURVEYED BY
WATSON AND SON
108 BROADWAY
CENTREVILLE, MD.

MSA 554 1251-2161